

# Community Value Plan (CVP)

Workshop 1 – Community Values / Features  
Saturday September 13, 2008



## Agenda – Session Overview

- 9:00 Opening Remarks**
- 9:15 Overview of CVP Framework, Principles and Applications**
- 9:45 Identification of Community Values / Features**
  - What does your community value?
  - What are the key community features & why are they important?
  - What features are most essential?
- 11:00 Summary of Identified Community Values / Features**
- 11:35 Open Forum / Next Steps**
- 11:55 Closing Remarks and Adjournment**

## Agenda – Session Overview

- 1:00 Opening Remarks**
- 1:15 Overview of CVP Framework, Principles and Applications**
- 1:45 Identification of Community Values / Features**
  - What does your community value?
  - What are the key community features & why are they important?
  - What features are most essential?
- 3:00 Summary of Identified Community Values / Features**
- 3:35 Open Forum / Next Steps**
- 3:55 Closing Remarks and Adjournment**

## Getting and Giving the Most

- It's OUR meeting ... participate enthusiastically
- Focus on the future
- Terminology expertise is secondary
- There is such a thing as a bad idea!
- Build, don't duplicate
- Respect (for each other and the process)
- Voices without titles
- Consensus on no consensus
- Informal style, structured approach
- No dissertations (rather, 'rap and roll')

## Community Value Plan (CVP)

### *What it is:*

- ❑ Opportunity to further enhance public involvement
  - Obtain comments from and understand the cultural, social, historical and/or environmental concerns of stakeholders residing in communities adjacent to and within close proximity to the Technically Recommended Route
  - Develop plan that recognizes selected priority community values
  - Will assist the Study Team in understanding the key values of a community's natural and built heritage environments
  - Mitigation or enhancements resulting from the CVP will be made within the 407 East transportation corridor right-of-way

## Community Value Plan (CVP)

### *What it isn't:*

- ❑ It is not a route planning exercise
- ❑ It is not a forum to discuss:
  - Need and justification for corridor
  - Number of lanes
  - Interchange locations
  - Road closures

## CVP Approach

- ❑ Collaborative, interdisciplinary approach
- ❑ Involves all stakeholders in the development of a transportation facility that:
  - fits into its physical setting
  - preserves the scenic, aesthetic, historic and environmental resources of its location
  - maintains mobility and safety for its users

## CVP Objectives

- ❑ Promote and encourage input from community members in identifying key areas of concern in their respective communities
- ❑ Maintain open, timely and honest communication with stakeholders
- ❑ Consider strategies that will retain and/or enhance the character of potentially affected communities
- ❑ Document discussions and decisions in an open, transparent and accessible format

## Guiding Principles

- Address the Transportation Need
  - Safe, Financially Feasible, Implementable
- Be an Asset to the Community
  - Accepted by Stakeholders
  - Adds lasting value to the Community
- Be Compatible with the Natural and Built Environments
  - Implemented with minimal impacts
  - Aesthetically appropriate

## Key Elements of CVP Process

- Assemble, utilize and manage diverse technical resources
- Integrate environmental and engineering technical tasks
- Incorporate meaningful public involvement
- Consider multiple alternatives
- Establish the criteria for the decision making process
- Maintain open and transparent communication
- Fully document all key decisions

# Typical Applications

## Structures / Facilities

- Interchanges
- Overpasses / underpasses
- Gateways to a community
- Watercourse crossings
- Support facilities



Overpass / Underpass



Bridge Designs / Watercourse Crossings



Retaining Walls

# Typical Applications

## Recreational Facilities / Community Connectivity

- Overpasses / Underpasses
- Gateways to a community
- Watercourse crossings
- Reforestation plots
- Support facilities
- Noise barriers
- Visual screens

Wildlife Crossings & Structural Treatment with Pedestrian Passage / Trails



Gateway Treatments & Designs



Enhanced Aesthetic Designs



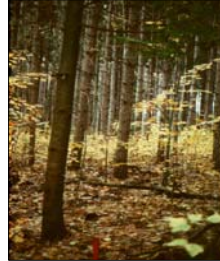
# Typical Applications

## Natural Heritage / Air / Noise

- Stretches of corridor adjacent to a woodlot / wetland
- Watercourse crossings
- Reforestation plots
- Noise barriers
- Visual screens



Extended culverts avoid impacts to rare fish species



Landscaping – berms constructed with excess earth material can enhance aesthetics and mitigate noise



Enhanced Noise / Privacy Walls



Fencing helps minimize wildlife access to the highway, reducing wildlife collisions



Enhanced Landscape Improvement Concepts

# CVP Workshop Objectives

## Workshop #1 – Community Values & Features

- What and Why
  - Identify community values
  - Identify key community features and their importance
  - Identify most essential features

## Workshop #2 – Mitigation / Enhancement Measures

- How
  - Present alternative mitigation / enhancement measures
  - Identify preferred strategy

## Workshop #3 – Recommended Community Value Plan

- Path Forward
  - Present recommended plan
  - Obtain comments on recommended plan
  - Obtain comments on CVP process

# Overview of CVP Workbook

- ❑ Provides resource material to participants
- ❑ Documents involvement and recommendations of CVP participants
- ❑ Documents development of the CVP and its processes
- ❑ Documents results of CVP process, including Recommended Community Value Plan for the 407 corridor

## Workbook Table of Contents

Community Value Plan Workbook		407 East EA & PO Study
<u>Table of Contents</u>		
1.	Overview of CVP Process	
2.	CVP Introductory Session	
a.	Presentation Slides	
b.	Session Summary	
3.	Questionnaire Responses	
4.	Technically Preferred Route Mapping	
5.	Study Area Photographs	
6.	CVP Workshop Objectives	
7.	Workshop #1 – Community Values / Features	
a.	Agenda	
b.	Presentation Slides	
c.	Workshop Summary	
8.	Workshop #2 – Mitigation / Enhancement Measures	
a.	Agenda	
b.	Presentation Slides	
c.	Workshop Summary	
9.	Workshop #3 – Recommended Community Value Plan	
a.	Agenda	
b.	Presentation Slides	
c.	Workshop Summary	
10.	Resource / Background Material	
11.	Study Schedule	
12.	Glossary of Terms	
13.	Frequently Asked Questions	
14.	Community Value Plan Report	
15.	Notes	

# Objectives of Breakout Session

## Identify Community Values / Features ... What & Why

- ❑ What does your community value?
- ❑ What are the key community features and why are they important?
- ❑ What features are most essential?



## Breakout Groups

## Open Forum

Comments / Ideas / Issues

## Next Steps

- ❑ Categorize identified / most essential features
- ❑ Identify alternative mitigation / enhancement measures
  - Universal measures
  - Site specific measures
- ❑ Workshop 2 – Mitigation / Enhancement Measures
  - October 25, 2008
- ❑ Workshop 3 – Recommended Community Value Plan
  - November 15, 2008
- ❑ PIC#5 – Final Preliminary Design
  - Late Fall 2008